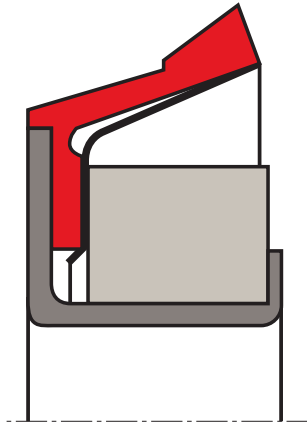


## oil seal R113

## seal spec



### description

these special shaft oil seals external lip have been developed especially for small diameters rolls starting from 70 mm.  
the construction of the R113 is made by:  
steel outer case, machine finished to DIN 3760 standard, onto which is bonded the sealing element.  
steel filler ring to provide the required rigidity to the seal.  
stainless steel finger spring to ensure the correct sealing performance even when shock loads arise.

### application



### category of profile

molded/standard/trade product only.

### single acting rotary shaft seal

### area of application

these seals are used in the general industry, steel mill, gear drives, mining industry and as a replacement of original spare parts in american machineries.

### operating parameters & material

material	temperature	max. surface speed	max. admitted misalignment
s-mart NBR 70 shore A (±5)	-20°C ... + 120°C	≤ 15 m/s	1,5
s-mart FKM 70 shore A (±5)	-20°C ... + 220°C	≤ 25 m/s	1,5

the stated operation conditions represent general indications. it is recommended not to use all maximum values simultaneously.  
surface speed limits apply only to the presence of adequate lubrication film.

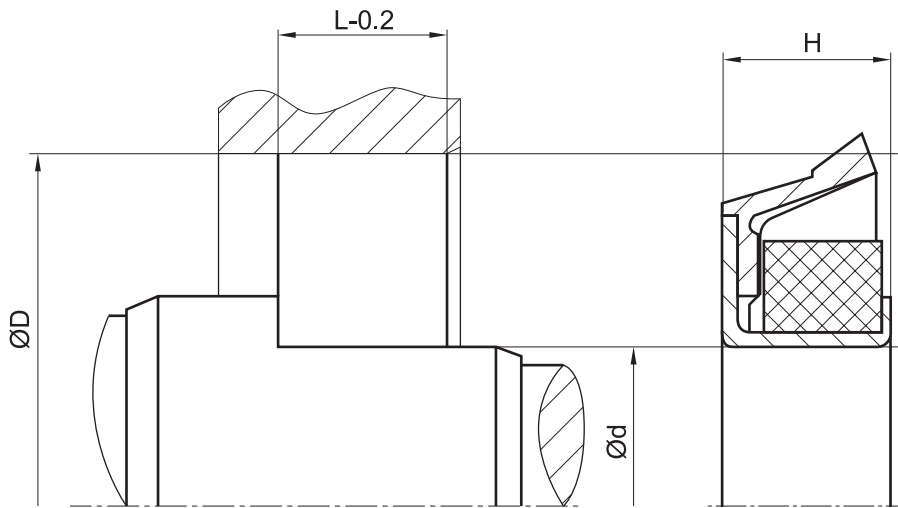
### shaft & housing tolerances [mm]

shaft Ø [mm]	≤ 100 ± 0.080
	101 ÷ 150 ± 0.100
	151 ÷ 250 ± 0.130
	≥ 250 ± 0.250
housing Ø [mm]	≤ 76 ± 0.025
	77 ÷ 150 ± 0.040
	151 ÷ 255 ± 0.050
	256 ÷ 510 ± 0.05/-0.10
	511 ÷ 1015 ± 0.05/-0.15
	> 1015 ± 0.05/-0.25
shaft Ø	fitting chamfer "F"
≤ 250	7.00
> 250	12.00



**seal & housing recommendations**

*please note that we are able to produce those profiles to your specific need or any non standard housing. for detail measurements, please see seal-mart catalog...*



*don't hesitate to contact our technical department for further information or for special requirements (temperature, speed etc.), so that suitable materials and/or designs can be recommended.*